

TECHNICAL SPECIFICATION

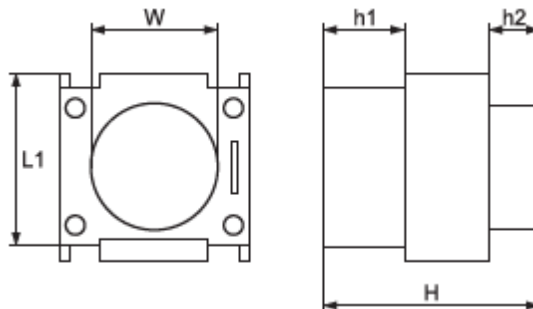
Time delay contact block LT02-Dxx



Description:

LT02-Dxx is designed to set time intervals from 0.1 to 180s in different control schemes. It is used most frequently in combination with contactors from LT1-Dxx series to form “star/delta” starters for electrical motor control, as it provides the necessary time for motor winding.

Dimensions:



W	L1	h1	h2	H	W2
33	48	22	14	59	45

Variants:

Type	Number of contacts	Time delay	Catalogue number
LT02-DT0	NO+NC	0.1~3s	23901
LT02-DT2	NO+NC	0.1~30s	23902
LT02-DT4	NO+NC	10~180s	23903

